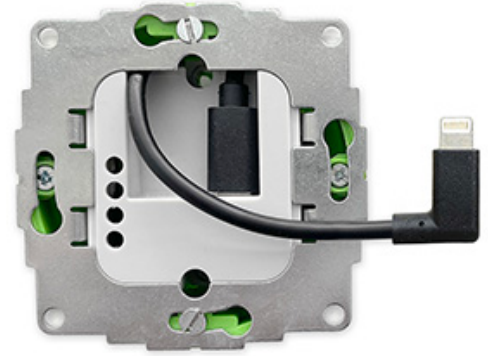


Datasheet
2024-10-10

Product Type
Product Name
GTIN / EAN
MPN
Market Entry

s48 L
sCharge 20W Lightning®
4260258610482
sCh-12W-8pin-1.0
March 2019



Description

230V power supply 20W with USB C to Lightning® cable.
The world's first flush-mounted power supply unit that delivers 20W in a wall box that is only 40mm deep. But not only the power supply is flush-mounted, also the USB plug does not protrude beyond the wall. This allows for very flat installations in front of the wall.
Nominal input: 100 - 250 V ~, ±10 % , 50 - 60 Hz,
Nominal output: 5V 3A and 9V 2,22A

Compatibility

All devices with Lightning® connector
The sCharge 20W fits into all 1gang junction boxes with min. 42mm depth

Certifications

KEMA (EUR), CE
Low Voltage Directive LVD EN 62368-1:2014 + A11:2017
EMC Directive EN 50032:2015
Ecodesign Directive 2009/125/EC, 2019/1782/EC
RoHS Directive 2011/65/EU, 2015/863
Reach Regulation EC No 1907/2006, 1272/2008



Content

In-wall Charger 20W with Lightning cable, 30 cm long
Instructions in EU languages

Material/ Ecology
Packaging

Metal support frame, plastic housing.
RoHS compatible, WEEE registration: DE 64398562
Packaging completely made of cardboard



Measures/ Weight

Box 80 x 80 x 50 mm (HxWxD), 80 g (sCharge only)
Product 71 x 71 x 33 mm with metal frame, 120 g (incl. cable and packaging)

HS Code
Country of Origin

8504 4083
China



Mandatory information according to the General Product Safety Regulation (GSPR):
Note! Installation only by persons with relevant electrical knowledge and experience!

Improper installation puts your own life and the lives of the users of the electrical system at risk. Improper installation may result in serious damage to property, e.g. due to fire. You may be personally liable for personal injury and damage to property. Contact an electrician!