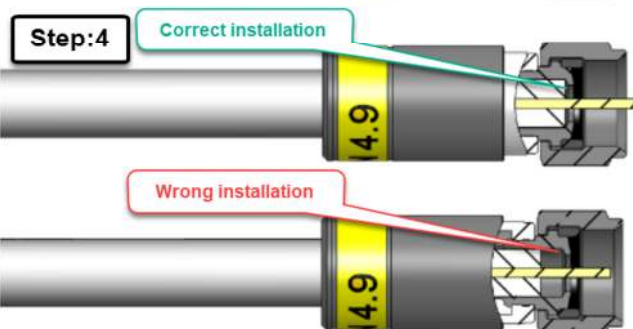
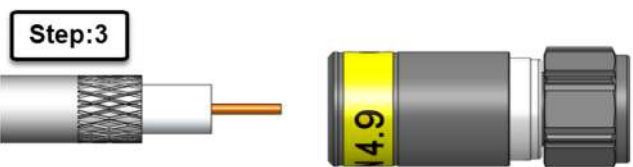
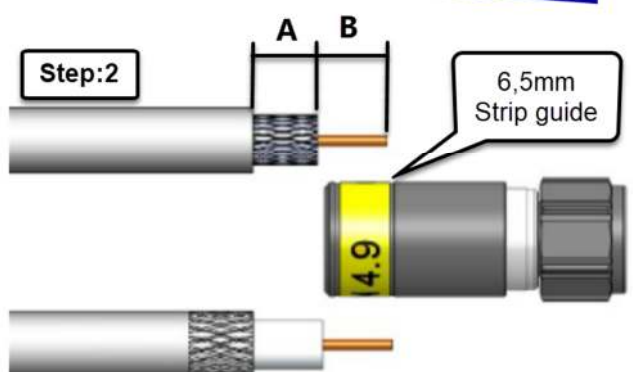
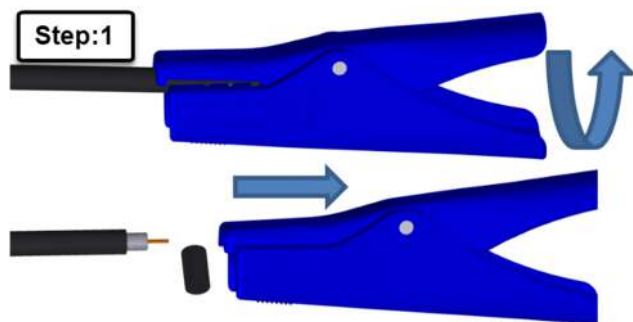


Mounting Instruction for F – TrueDrop™

Item no. 99909916, 99909921, 99909935, 99909941, 99909946



Step 1

Strip the cable to obtain the following stripping

A = 6,5mm (outer conductor)

B = 6,5-8,0mm (inner conductor)

For “Quad shield”, “Tri shield” and “Super shield” cables: Remove the outer braid and foil, only Leave the inner foil and inner braid, inner foil must be attached to dielectric and make sure, it is smooth and undamaged.

Clean the cable inner and outer conductor with a conductor cleaner or any other appropriate equipment.

For your safety and best results Cabelcon’s pre-adjusted Cable Stripper is recommended. Please read the instructions for use, supplied with the tool.

Step 2

Verify stripped dimensions by using cutting guide on the connector.

Step 3

Brush / fold exposed braid back over jacket by using a stripping tool brush (if available) or any other nonmetallic brush.

Step 4

Push the connector over the foil, allow the support sleeve to slide between the foil and braid. Press and turn until the dielectric is fully advanced at the mechanical stop in the front.

For better connector and cable grip, Cabelcon’s connector mounting, and cable rubber grip tool can be used.

Step 5

Compress the connector by using the recommended Cabelcon’s compression tool

Tools and Accessories	Item No.
CABLE STRIPPER ROTARY RG 6/59/MINI.	98501010
CABLE STRIPPER RG6/59 W. HEX 11 SPANNER	98501040-02
CABLE STRIPPER I/D RG6/59 WB FOR INDOOR PVC CABLE	98501083
CABLE CUTTER DROP RG59/6/11 CCS	98028619-01
CONDUCTOR CLEANER CC-200EUR	98500903
TORQUE WRENCH AH HEX 11mm 4,5NM	98029080-01
COMPRESSION TOOL CX3 ALL SIZE F. BNC & IEC for RG6/7/11/59	98029072-01
COMPRESSION TOOL CX3 RG59/6 WB	98029046
COLOR MARKING CX3. BLACK/BROWN/RED/ORANGE/YELLOW/GREEN/BLUE/VIOLET/GREY/WHITE/TURQUIS	990040**

Cabelcon
An Amphenol Company

Amphenol Cabelcon ApS
Industriparken 10, DK-4760 Vordingborg
www.cabelcon.com
cccustomeercare@cabelcon.com

Rev. Date: 11/01-2022